



900 Inlet Square Drive
Murrells Inlet, SC 29576-7812
(843) 651-1598
FAX: (843) 651-7889

February 10, 2012

Attention: Mr. Frank D'Amato, President
Tradition Club HOA
256 Sand Fiddler Drive
Pawleys Island, SC 29585

Dear Mr. D'Amato:

Re: Underground Utility Maintenance in Tradition Club Subdivision

Santee Cooper line crews will be performing maintenance to underground electrical facilities in Tradition Club Subdivision beginning the week of March 5, 2012 through August 31, 2012. The line crews have encountered a number of small trees, shrubs, and bushes blocking our transformers and underground equipment. Our line crews have also discovered a number of padmount transformers that are partially buried below final grade and other transformers that need to be replaced. Raising or replacing transformers may cause momentary power interruptions, which require digital clocks and electronic devices to be reset.

We require a minimum clearance of 10' in front of any equipment doors and 3' on the sides and rear. This is necessary so utility crews can work around our equipment during maintenance or in the event of a power outage.

Please remove any vegetation, which currently impedes access to Santee Cooper's equipment. These plantings may be relocated, if the required right-of-way minimum access distances are met. The enclosed drawing will provide you with the minimum clearances. Please consider the mature plant size as you relocate. Remember, you must call **Palmetto Utility Protection Services** prior to any digging. They will locate the underground utility lines at no cost to you. You can simply dial 811, the national "Call Before You Dig" phone number, or call 1-888-721-7877.

In the event the vegetation has not been removed or relocated when crews arrive, it will be necessary for our personnel to remove it at that time.

During our maintenance efforts, it may become necessary for us to temporarily interrupt your electric service in order to replace wire and/or equipment. If an outage is required, we will attempt to notify you to minimize any inconvenience.

We appreciate your help and willingness to assist us in this matter. Should you have any questions or concerns, please contact me at (843) 651-1598 Ext. 3808.

Sincerely,

A handwritten signature in blue ink that reads 'Carlita P. Goff'.

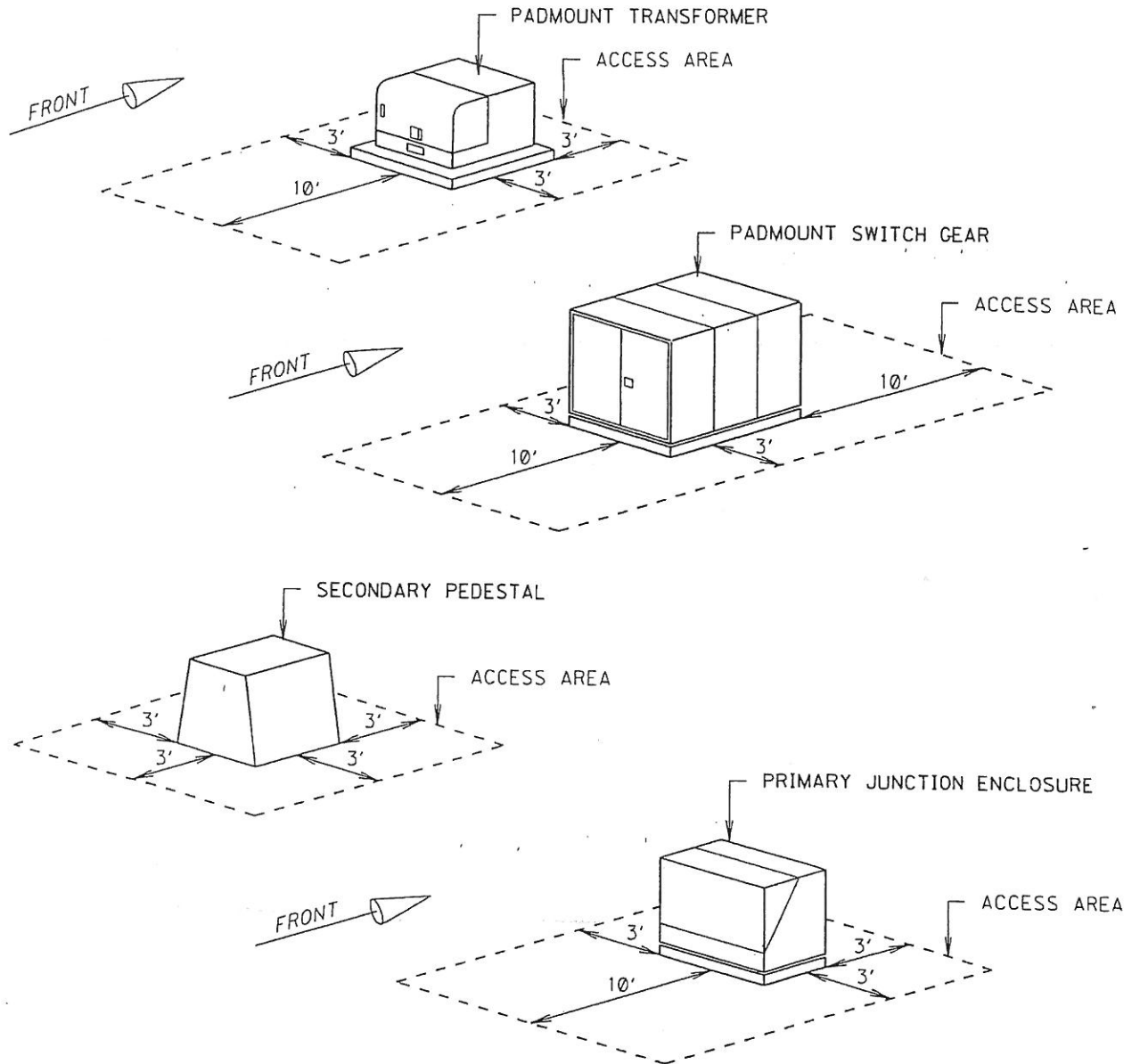
Carlita P. Goff, P.E.

Supervisor, Area Distribution Engineering – Garden City & Conway

Enclosure

pc: Mr. Robert Singleton – Garden City Area Operations Supervisor
Mr. Jimmy Greene – Crew Foreman
Mr. Tony Owens – Crew Foreman
Mr. Donny Metzger – Crew Foreman
Mr. Jim Poston – Engineering Associate

PADMOUNT AND URD EQUIPMENT ACCESS CLEARANCES



NOTES:

1. IN THE EVENT OF EQUIPMENT FAILURE OR POWER OUTAGE, IT IS NECESSARY FOR UTILITY CREWS TO HAVE ADEQUATE ACCESS TO PADMOUNTED EQUIPMENT.
2. ACCESS TO THE FRONT SHALL BE TEN FEET. ACCESS TO THE REAR AND SIDES SHALL BE THREE FEET FOR TRANSFORMERS OR PRIMARY ENCLOSURES.
3. PADMOUNTED SWITCHGEAR REQUIRES TEN FEET OF CLEARANCE BOTH FRONT AND REAR AND THREE FEET ON BOTH SIDES.
4. SECONDARY PEDESTALS REQUIRE THREE FEET ON ALL SIDES.
5. NO TREES, SHRUBS, FENCES, LARGE LANDSCAPING ROCKS, OR OTHER OBSTRUCTIONS SHALL BE PERMITTED IN ACCESS AREAS.

SERVICE INSTALLATION DETAILS									
REV	DATE	DESCRIPTION	BY	D.ENG	D.SUP	D.ENG	RF	BY Starnes	APVD